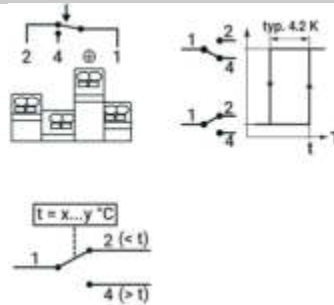


Temperature monitor

Connection diagram:



Safety instructions:

This device is designed for use in stationary heating, ventilation and air conditioning systems and must not be used for applications outside the specified area of application. Unauthorized adjustments are prohibited. The product must not be used together with devices that represent a danger to people, animals or property in the event of a malfunction.

Before installation, ensure that the entire power supply is interrupted. Do not connect to live / operating devices. The installation must be carried out by authorized specialist personnel. The legal and official regulations must be observed. The device contains electrical and electronic components and must not be disposed of as domestic waste. The local and currently valid legislation must be observed.

During the installation, testing and troubleshooting of this device, it may be necessary to work with powered components. Therefore only a specialist may carry out this work. If handled improperly, contact with live components can lead to serious injuries or even death.

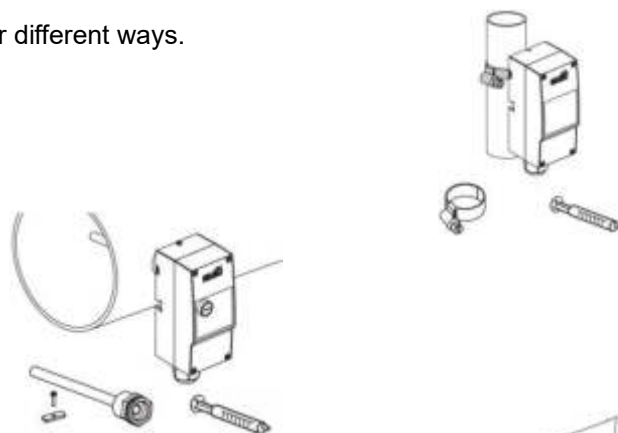
Assembly instruction:

Installation situation

The temperature monitors can be installed in four different ways.

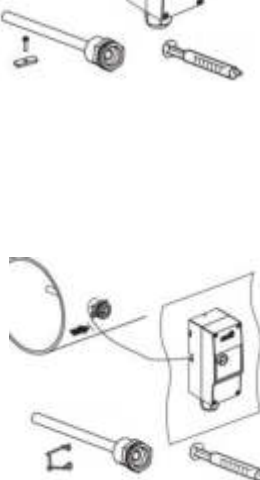
Pipe surface mounting

The fastening tape is included in the scope of delivery, the conductive paste is available as an optional accessory.



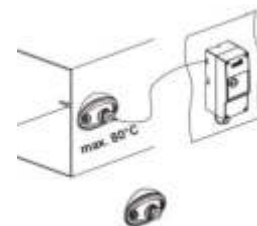
Immersion sleeve assembly

The immersion sleeve is available as an optional accessory



Wall mounting with probe in the flange

The flange is available as an optional accessory



Wall mounting with probe in the immersion sleeve

The immersion sleeve is available as an optional accessory



Temperature monitor

SCHNEID

Modern Life - Modern Solutions

www.schneid.at **EN**

