

Analogue output card for MR07-PLC controller

SCHNEID expansion board analog output card for MR07-PLC controller
8 analog outputs 0-10V

Order number:	170.11105
Order code:	Analogausgangskarte für MR07-SPS Regler



Overview:

The additional module extends the module controller by 8 analog outputs.

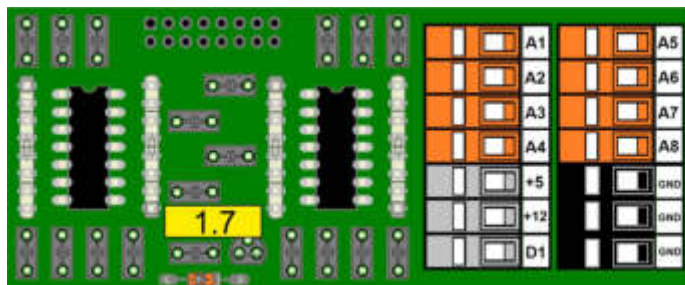
Use cases:

- Actuation of actuators with 0-10V
- Control of pumps and frequency converters with 0-10V
- Signal output (temperature specifications, etc.)

Scope of delivery:

Analog output card
16-pin ribbon cables 80cm

Terminal plan:



AOUT Modul

- A1 LU1 - speed setpoint supply air fan
- A2 LU2 - speed setpoint exhaust air fan
- A3 K1/2/3 - position setpoint supply/bypass air flap
- A4 K4 - position setpoint recuperation air flap
- A5 LU1 - position setpoint heating coil static valve
- A6 LU2 - position setpoint cooling coil static valve
- A7 K1/2/3 - setpoint heating load
- A8 K4 - setpoint cooling load

Analogue output card for MR07-PLC controller

Signal short circuits:

A1 analog output 1 (0-10V)
A2 analog output 2 (0-10V)
A3 analog output 3 (0-10V)
A4 analog output 4 (0-10V)
A5 analog output 5 (0-10V)
A6 analog output 6 (0-10V)
A7 analog output 7 (0-10V)
A8 analog output 8 (0-10V)

D1 switching output 12V (switch relay to + 12V)

+5 output terminal 5 VDC
+12 output terminal 12VDC

GND signalground

Scope of delivery:

SCHNEID analog output card for MR07-PLC controller

Technical specifications:

Intrastat number:	8537.10.91.90
Country of origin	EU/AT
Height, width, depth (in mm)	46x100x17
Weight (in kg)	0.038 without cable 0.066 with cable
Degree of protection	IP-20
Ambient temperature	0°C....+40°C
Operating voltage	12VDC
Power consumption	< 1VA
Max. Nominal current per output	Max. 20mA
Connection type	Fixed wiring terminals
Connection technology	Spring clamp
Cable cross section	Max. 2.5mm ²
Mounting type	DIN-RAIL TS35
Operating time	Continuous operation
Degree of pollution	2