

# **SCHNEID**

## **FBR-12 LFT**

**Ventilation remote control  
with color touch screen and room sensor**

**Modern Life - Modern Solutions**



**NEW**

**SCHNEID** GesmbH

# Ventilation remote control FBR12-LFT

## Remote control for ventilation control FBR12 / xx

with touchscreen / room sensor for SCHNEID SPC-MC1.

Order number:	120.xxxxx
Order code:	SCHNEID Fernbedienung für Lüftungssteuerung FBR12/xx



### Overview

The SCHNEID-FBR12-LFT remote control is compatible with the SCHNEID SPC-MC01 controller.

The color touchscreen control panel always displays the time, the current outdoor and room temperature, the storage tank temperature, the setpoint adjustment and the operating status. The display shows: Automatic / Day, Automatic / Night, Automatic / OFF or one of the 5 dialing programs, which can be set at the bottom of the display (automatic, day, night, party and OFF). The two arrow keys are used to change the current room temperature by  $-4^{\circ}\text{C}$  to  $+4^{\circ}\text{C}$ . A room sensor is installed in the remote control, which can be used to apply various heating control programs and to optimize the SCHNEID control unit.

When the function keys on the display are touched, the backlight turns on, and off again after 30 seconds from the last operation.

- There are **16 million different display background colors and foreground colors** to choose from.
- Available in **5 different frame colors** white, black, chrome, red, blue.  
(The frames can be easily exchanged if necessary.)

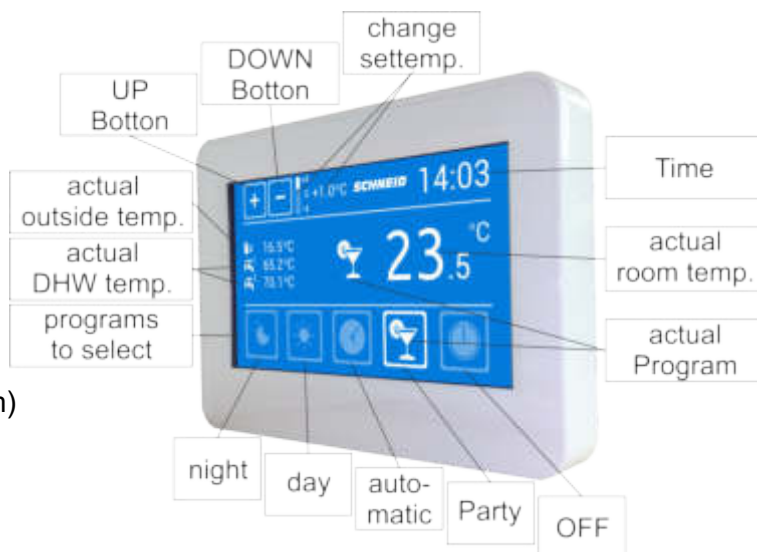
## Communication with the remote control

to read of:

- actual room temperature
- actual outside temperature
- actual storage temperature(s)
- actual time
- actual conditions
- Standard value (-4,0°C bis +4,0°C)
- Room temperature adjustment

adjustment :

- Time (in HH:MM)
- current conditions (election program)
- Set point (-4,0°C bis +4,0°C)
- Room temperature adjustment
- Absences time



## Set point adjustment

Pressing the "Plus" or "Minus" key in the main screen will enter the setting mode. Each touch of the "plus" button increases by + 0.1 ° C to a maximum of + 4.0 ° C, each touch of the "minus" button decreases by -0.1 ° C to a maximum of -4.0 ° C. The screen returns to the main menu 3 seconds after the last touch.

## Election programs

### Automatic mode

The operating mode of the heating circuits (heating or lowering operation) depends on the time program. The display always shows automatic and day, night or off.

### Day

The heating circuits are in heating mode, regardless of the time program.

### Night

The heating circuits are independent of the time program in the lowering mode, i. The setpoint temperature is reduced accordingly to the settings on the main control unit.

### Party-Mode

The heating circuits are put into heating mode for a period of 2 hours (depending on the setting in the main control unit). After the time has elapsed, the controller returns to the last mode selected.

### OFF / antifreeze

The control mode is deactivated except for the frost protection circuit. If the outside temperature falls below the frost protection temperature, the frost protection circuit is activated.

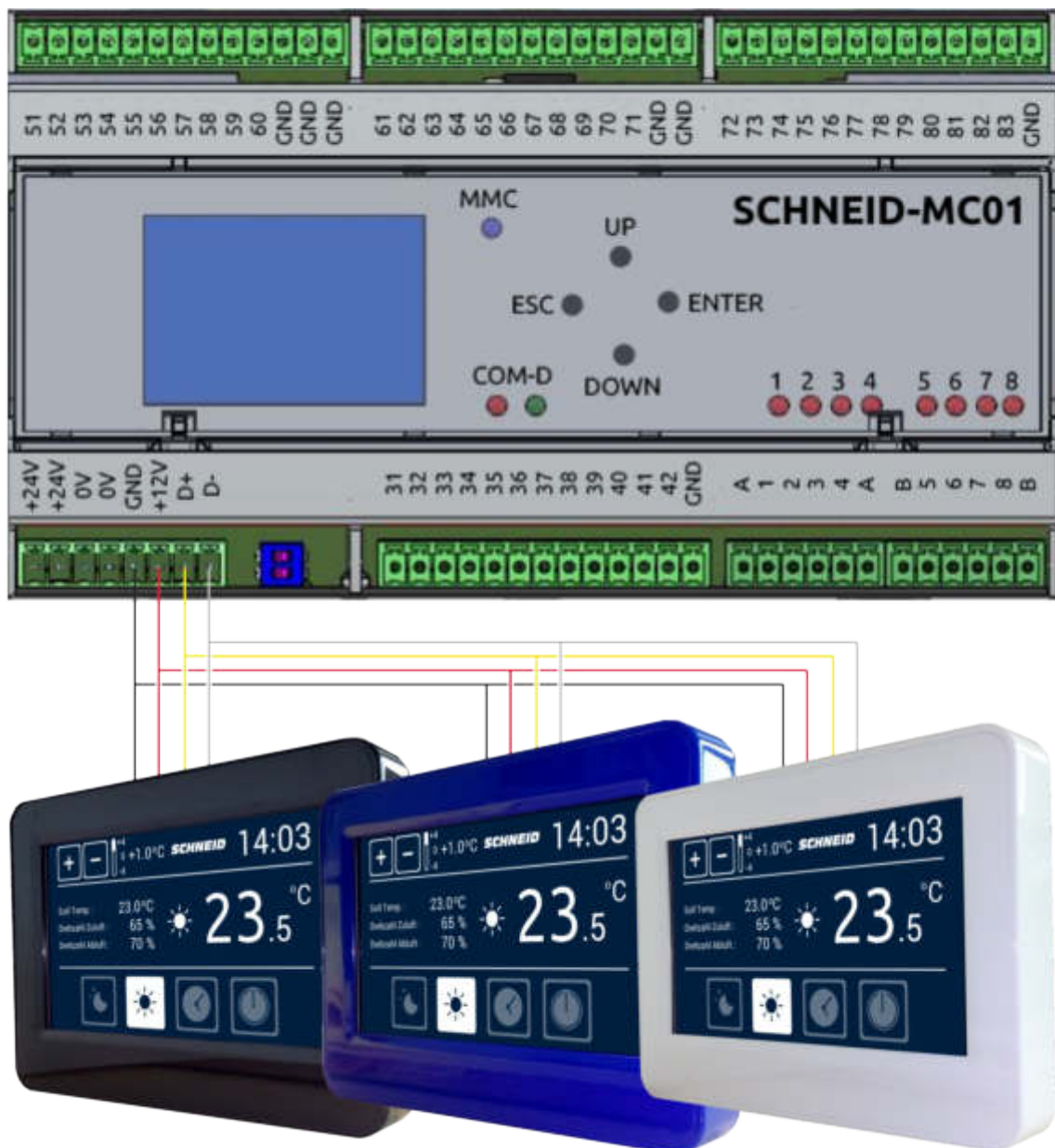
# Ventilation remote control FBR12-LFT

## Connection diagram & Setup for the SCHNEID-MC01

4. UART interface (COM-D) in the form of RS485.  
Executed on the PLC (12V +/- RS485 D+ / D-).  
Used for direct connection of a digital SCHNEID FBR12-LFT.

### Baud rate setting

The baud rate for the MC01 should not be higher than 38400. There are no further changes required.





# Ventilation remote control FBR12-LFT

## Configuration / ID-settings on the FBR12

### MENU

Pressing the SCHNEID logo will take you to the menu.



### Settings

<b>screen brightness</b>	Adjustment of the brightness of the display
<b>Screensavers</b>	Adjustment of the brightness of the screen saver. The value 0 deactivates the screensaver, the value 1 produces a black display, values from 1 - 100 change the brightness.
<b>Volume</b>	Adjustment of the volume of the key tones.

### Background

The colors for the foreground and background are set here. You can choose from the 16 predefined colors, or choose your own color using RGB code.

### Vacation time

For the configuration of vacation times

### Heating times

The heating times can be set under this menu item.

### Save

To save, press and hold this button for 4 seconds.

### Abort

aborts the process without changing the settings

## EXPERT SETTINGS

By pressing the room temperature for 5 seconds you get into the expert settings.

### Baudrate

The baud rate must match the settings of the controller on COM-C.

### Temperature offset

serves to adjust the room temperature.

### FBR ID

the ID must match the address of the heating circuit (eg: heating circuit 0 = address 0).

### CM06 Delay

the ID must match the address of the heating circuit (eg: heating circuit 0 = address 0). For multiple MR08 subcommunicators, the setting is as follows:  
Controller "Master" -> Address 00 to 07 / Controller 1 -> Address 10 to 17 / Controller 2 -> Address 20 to 27 / Controller 3 -> Address 30 to 37 etc.

## CLEANING MODE

Pressing the clock for 5 seconds will enter the cleaning mode, which locks the FBR for 15 seconds and can be cleaned without accidentally adjusting the parameters.



# Ventilation remote control FBR12-LFT

## Overview models and accessories

<b>Order number :</b>	<b>120.16861</b>
<b>Order code :</b>	<b>SCHNEID Fernbedienung für Lüftungssteuerung FBR12/bk</b>

Ventilation remote control FBR12 with frame in the color black

<b>Order number :</b>	<b>120.16862</b>
<b>Order code :</b>	<b>SCHNEID Fernbedienung für Lüftungssteuerung FBR12/bl</b>

Ventilation remote control FBR12 with frame in the color blue

<b>Order number :</b>	<b>120.16863</b>
<b>Order code :</b>	<b>SCHNEID Fernbedienung für Lüftungssteuerung FBR12/cr</b>

Ventilation remote control FBR12 with frame in the color chrom

<b>Order number :</b>	<b>120.16864</b>
<b>Order code :</b>	<b>SCHNEID Fernbedienung für Lüftungssteuerung FBR12/re</b>

Ventilation remote control FBR12 with frame in the color red

<b>Order number :</b>	<b>120.16865</b>
<b>Order code :</b>	<b>SCHNEID Fernbedienung für Lüftungssteuerung FBR12/wh</b>

Ventilation remote control FBR12 with frame in the color white

<b>Order number :</b>	<b>120.16530</b>
<b>Order code :</b>	<b>Rahmen für Fernbedienung FBR12 &amp; FBR14/bk</b>

Frame in the color black

<b>Order number :</b>	<b>120.16533</b>
<b>Order code :</b>	<b>Rahmen für Fernbedienung FBR12 &amp; FBR14/bl</b>

Frame in the color blue

<b>Order number :</b>	<b>120.16532</b>
<b>Order code :</b>	<b>Rahmen für Fernbedienung FBR12 &amp; FBR14/cr</b>

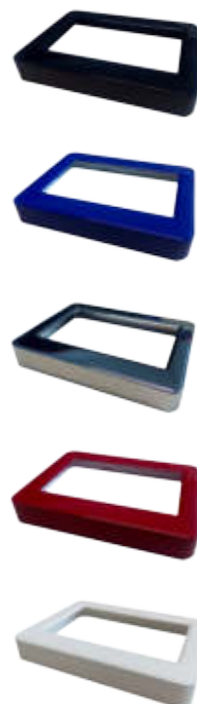
Frame in the color chrom

<b>Order number :</b>	<b>120.16534</b>
<b>Order code :</b>	<b>Rahmen für Fernbedienung FBR12 &amp; FBR14/re</b>

Frame in the color red

<b>Order number :</b>	<b>120.16531</b>
<b>Order code :</b>	<b>Rahmen für Fernbedienung FBR12 &amp; FBR14/wh</b>

Frame in the color white

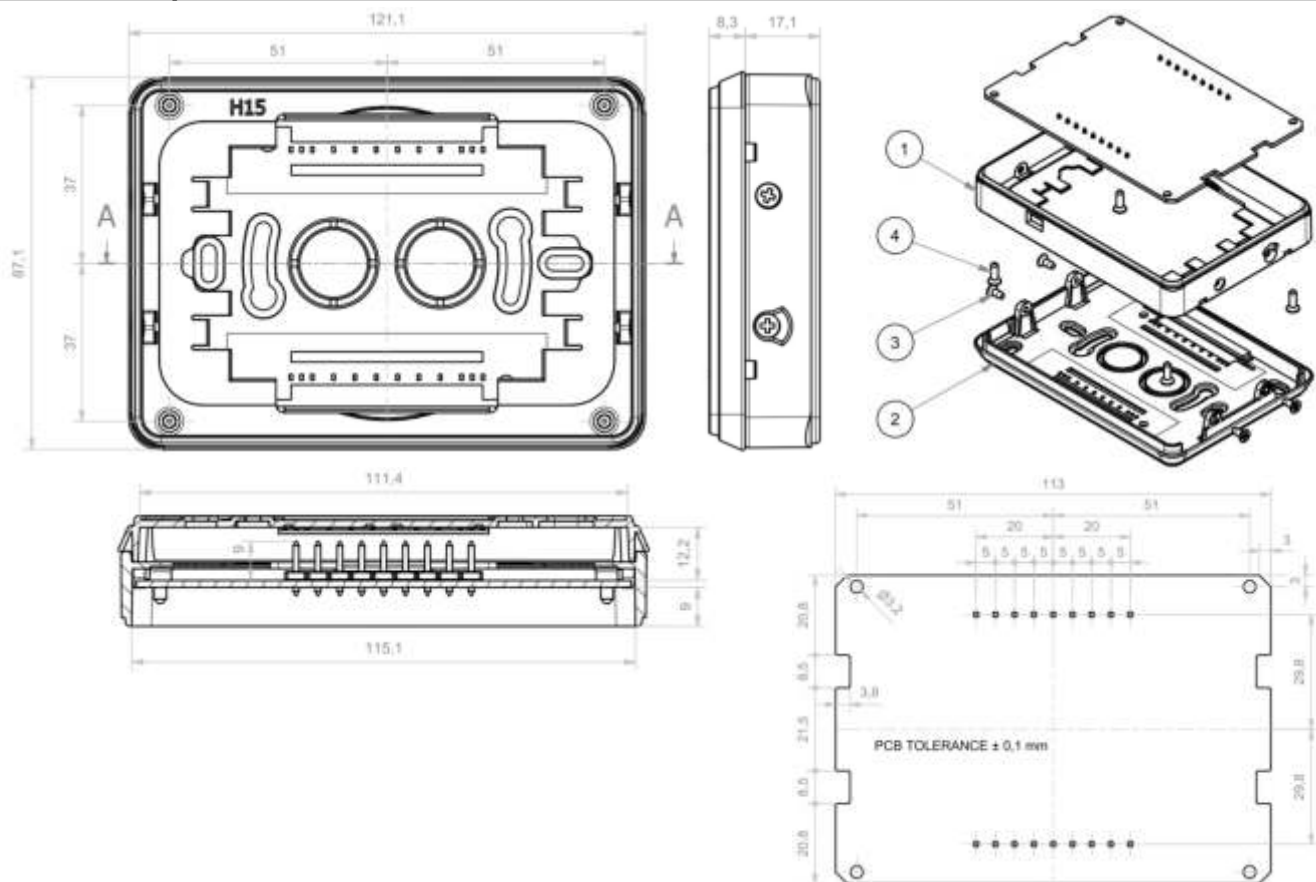


# Ventilation remote control FBR12-LFT

## Lieferumfang:

Fernbedienung FBR12-LFT mit Farb-Touchscreen/Raumfühler und Rahmen (Farbe nach Wahl)

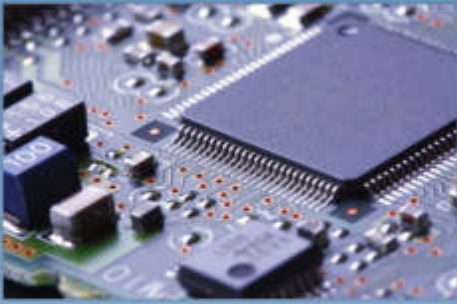
## Technical specifications:



Intrastat Nummer	8526.92.00
Country of origin	EU/AT
Height, width, depth	87,1x121,1x25,4mm
weight	0,175
protection	IP20
ambient temperature	0-40°C
supply voltage	12-24VDC
current consumption	100mA
communication: ModBus	RS485, Baudrate 300-9600
Tolerance of measured and displayed room temperature	+/- 0,1°C
temperature display	0°C ~ 99°C
Iconset	<a href="https://icons8.de/">https://icons8.de/</a>



# *Our services in summary*



## **Hardware**

Development at first hand



## **Project management**

Supervise and achieve your goals



## **Software**

Solve custom demands and requirements



## **Monitoring system**

The entire system at a glance



## **Quality management**

Safeguards a first-class quality



## **Support**

Your concern is our request



All rights reserved. This document is provided by the SCHNEID GesmbH.

© 2020 **SCHNEID** GesmbH  
Gewerbering 14-16  
8054 Graz/Pirka, Austria  
Phone: +43 (0) 316 28 50 22 - 0  
Fax: +43 (0) 316 28 50 22 - 21  
[www.schneid.at](http://www.schneid.at)