

# Service adapter-USB



Schneid GesmbH | Gewerbering 16 | A-8054 | Graz/Pirka | Tel: +43 (316) 285022

Products, data sheets, documentation, MR12-SCHEMA-calculator: [www.schneid.at](http://www.schneid.at)

## SCHNEID service adapter USB for communication with all SCHNEID module controllers

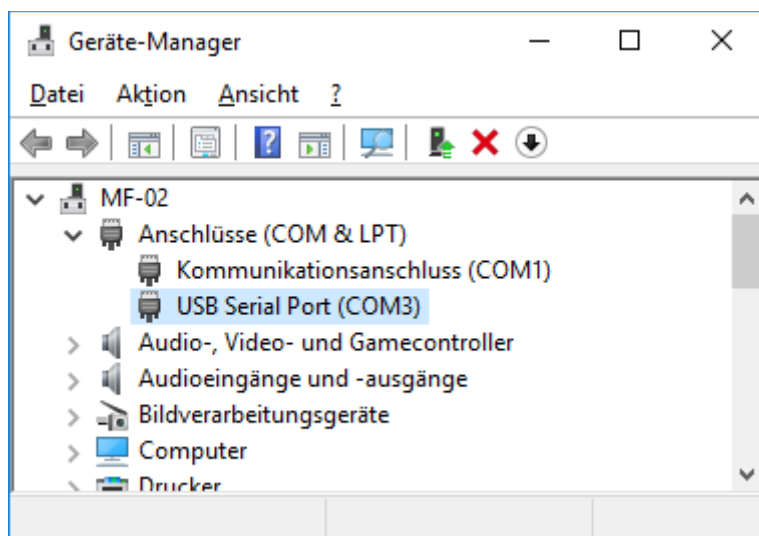
Order number:	020.15278
Order code:	SERVICEADAPTER USB



### Overview:

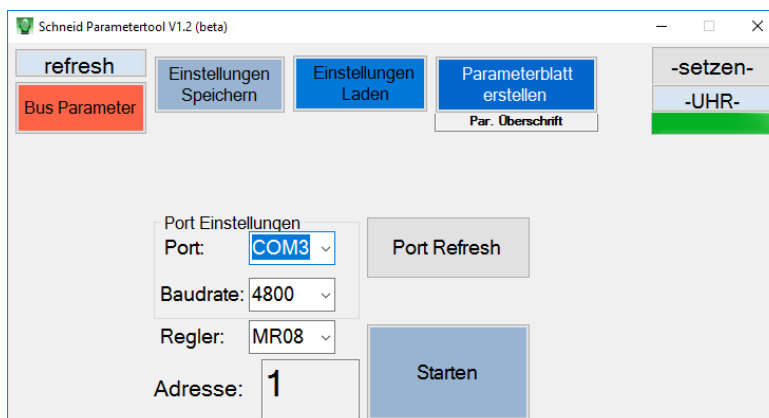
The SCHNEID service adapter USB is used for quick parameterization of the control device. The adapter is plugged directly into the COM port of the controller (if a COM base is available, the ribbon cable must be disconnected beforehand). The adapter is suitable for all control devices with a 10 or 14-pin COM connection.

1. Connect the service adapter to the PC with a micro USB cable
2. Depending on the operating system, the driver is installed itself or a manual installation is requested. The USB drivers are included in the enclosed USB memory.
3. Check the port number in the device manager:

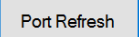



# Service adapter-USB

## 4. Start the parameterization software



With "Port:" the port number must now be set according to the device manager (here "COM3" in the example) If the port in question does not appear in the selection list,

a  has to be carried out first.

After the baud rate and address have been set according to the controller, the data is read out using .

**The parameter tool can be obtained on the homepage [www.schneid.at](http://www.schneid.at) under "Download".**

## Interface connections:

Controller connector: 10-pin  
Micro USB connection

## Scope of delivery:

SCHNEID service adapter USB for communication with all SCHNEID module controllers with COM connection;  
Includes micro USB cable.

## Technical specifications:

Intrastat Number:	8537.10.91.90
Country of origin	EU/AT
Height, width, depth (in mm)	40x34x24mm
Weight (in kg)	0.0524 kg
Degree of protection	IP-65
Ambient temperature	0°C....+40°C
Connection type	Micro-USB-Anschluss
Mounting type	Adapter
Degree of pollution	2